

Table Runner

Table Runner finishes to 14" x 72".

Add an elegant touch to your home with this quick and easy table runner that dresses up any table or dresser. The beaded trim adds a nice weight to the table runner and helps it drape over the edge.

Skill level: Experienced Beginner

Designed and written by Nancy Davis Murty

Sewn by Mary Wieser

Fabric Requirements:

Yardage is based on 42" wide fabric.

- 1/3 yard tan for the ends
- 1/8 yard purple for accent strip
- 1/3 yard rust for sides
- 1/3 yard brown floral fabric for center **OR** if using a stripe that runs along the length of the fabric you will need to purchase 1 1/4 yards
- 1 yard beaded trim for decorative finish (optional)
- 1 yard for backing
- 16" x 76" rectangle of batting

Cutting Directions:

All measurements include 1/4" seam allowance and are based on 40" of useable fabric. All strips are cut across the width of the fabric (wof), selvage to selvage, unless otherwise stated.

From the tan fabric cut:

- (2) 10 1/2" x 14 1/2" rectangles

From the purple fabric cut:

- (2) 2 1/2" x 14 1/2" rectangles

From the rust fabric cut:

- (2) 3 1/2" x 40 1/2" rectangles

From the brown floral fabric cut:

- (1) 8 1/2" x 40 1/2" rectangle

From the backing fabric cut:

- 2 strips, 14 1/2" wide x wof
 - ↳ subcut into (2) 14 1/2" x 36 1/4" rectangles

From the batting cut:

- (1) 14 1/2" x 72 1/2" rectangle



Assembly:

All seams are 1/4" unless specified otherwise.

1. Right sides together, pair up a purple 2 1/2" x 14 1/2" rectangle with a tan 10 1/2" x 14 1/2" rectangle. Sew together, press seam toward the darker fabric. Repeat for second purple and tan rectangles.
2. With right sides together sew a rust 3 1/2" x 40 1/2" rectangle to each side of the floral 80 1/2" x 40 1/2" center strip. Press seams toward the darker fabric.
3. With right sides together, sew a purple/tan rectangle to each end of the rust/floral center strip. Press seam allowance toward the purple fabric.
4. With right sides together, sew the two backing rectangles together along the short side and press seam to one side.
5. Lay the pieced table runner, right side up, over the batting. Place the backing fabric, wrong side up, over the pieced table runner. Be sure to line up the raw edges of all three layers. Sew together along both long sides of the layered table runner leaving both ends open. Turn right side out through one of the open ends. Press seams flat along the two sides.

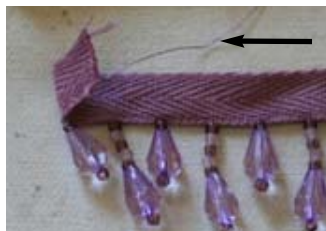
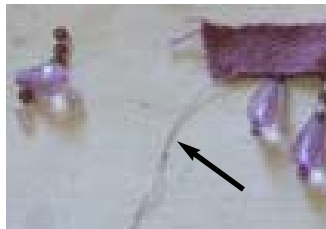
wrong side of backing fabric

6. Using a walking foot, machine quilt in the ditch on both sides of the brown floral and purple fabrics.

7. Separate the backing fabric from the batting and pieced front of the table runner at one end. Press the raw edge in about 1/2".



8. Cut the decorative beaded trim in two pieces that are each 16" long. Remove the first decorative bead from each end of the trim by pulling the beads from the thread. DO NOT CUT the thread to remove the bead. You want that long thread to catch in the seam to keep the beads from falling off.



Fold the end of the decorative trim back over on itself. I like to tuck the long thread up between the two layers of trim.



9. Insert the decorative trim inside the end of the table runner, between the front and backing fabric. Secure in place with pins as you work across the end of the table runner. The folded edge of the table runner should be at the edge of the decorative trim.

Flip the end of the table runner over to make sure the backing fabric is right along the edge of the decorative trim.



Using a zipper foot, top stitch right along the folded front edge of the table runner, securing the beaded trim in place.

Finishing Options:

- After sewing the beaded trim to the table runner, Mary went back and added additional quilting to the center and two outside edges. The use of metallic thread in the rust strips added a real festive touch and a quilt stencil with heavier weight thread created a special finish on the ends of the table runner.
- Add some applique to each end of the table runner for a different look. Tailor the applique to a special holiday or to the fabrics you chose for your runner.
- You can shorten or lengthen the table runner to fit a specific location in your home by adding or subtracting to the cut measurement of the brown floral and rust fabric strips. For example if you want your finished table runner to be 6" shorter – subtract the 6" from the 40 1/2" cut length. The new measurement to cut the strips is 34 1/2" long.

The directions of this pattern are written with the assumption that the quilter has a basic knowledge of quiltmaking. There are many great books and talented teachers available at local shops, quilt guilds or among our fellow quilting friends. And there is nothing as good as hands-on help, so you may want to look to one of these sources for any help if needed.

I hope you enjoyed this project and it puts a smile on your face, especially when you use the table runner around your home.

Visit the website at www.bee creativestudio.com to see the other great patterns that are available.



284 Ellsworth Road
Palmyra, NY 14522
315.597.1478
www.bee creativestudio.com