



Rainbow Rows



Finished quilt measures 54" x 64"

Skill level is Experienced Beginner

Designed by Nancy Murty

Quilts sewn by Toni Foster & Mary Wieser

Machine quilted by Nancy Murty

This quilt has all the colors of the rainbow plus two and makes me think of 8 pretty crayons lined up.

FABRIC REQUIREMENTS:

Yardage is based on 42" wide fabric.

- 1/3 yard red-purple print
- 1 3/4 yard red print
- 1/3 yard orange print
- 1/3 yard yellow print
- 1/3 yard green print
- 1/3 yard turquoise print
- 1/3 yard blue print
- 1/3 yard purple print
- 2 yards black print
- 3 3/8 yards for backing
- 60" x 70" batting

CUTTING DIRECTIONS:

All strips are cut across the width of the fabric (wof) unless otherwise stated. The width of the fabric is from selvedge edge to selvedge edge.

From the red print fabric cut:

- 1 strip 6 1/4" x wof
 - ↳ subcut strip into (5) 6 1/4" squares, cut squares along BOTH diagonals
- 6 strips 6 1/2" x wof for outer border

- (2) 3 3/8" squares, cut squares along ONE diagonal

From each of the red-purple, orange, yellow, green, turquoise, blue and purple fabrics cut:

- (5) 6 1/4" squares, cut squares along BOTH diagonals
- (2) 3 3/8" squares, cut squares along ONE diagonal

From the black print fabric cut:

- 8 strips 4" x wof
↳ subcut strips into (80) 4" squares
- 5 strips 2" x wof for inner border
- 6 strips 3" x wof for binding.

ROW ASSEMBLY:

All seams are sewn with a 1/4" seam allowance.

1. Count out (8) 4" black print squares and place in a stack right side up. Count out 2 sets of 8 large red-purple triangles and place in 2 stacks right side up. Arrange a stack of red-purple triangles and the black squares following the diagram.



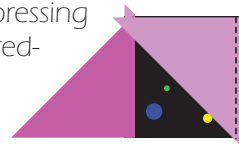
2. With right sides together, sew the red-purple triangles to the black squares, referring to diagram. Press seam toward the triangle.



3. Referring to the diagram, place the second stack of 8 red-purple triangles from step 1 with the black square unit completed in the previous step.



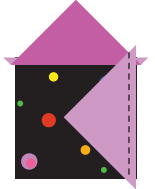
4. Sew a red-purple triangle to each black square unit, pressing seams toward the red-purple triangle. You should have 8 units.



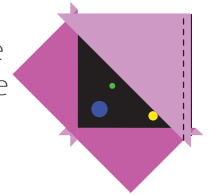
5. Gather together 4 small red-purple triangles and 2 black print squares. Sew a small red-purple triangle to each black square refer to diagram for placement. Press seam toward the triangle.



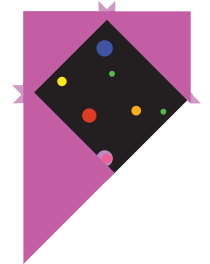
6. Sew a second small red-purple triangle to the black square unit, press seam toward the triangle.



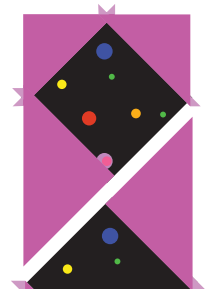
7. Sew a remaining large red-purple triangle to both the black square units from the previous step. Be sure to follow the diagram for placement of large triangle. Press seam toward the red-purple triangle.



You should have two units that look like the diagram, one for the top and one unit for the bottom of the row.



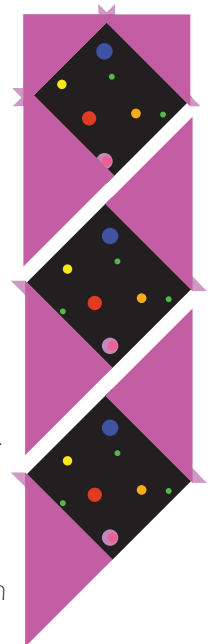
8. Sew the red-purple and black square units together butting seams together. Press seams to one side.



9. Repeat steps 1–8 to construct the remaining 7 rows.

10. Sew the eight rows together to create the center of the quilt top. Press seams to one side.

You should have two red-purple triangles left over. They will not be used in the construction of the quilt.



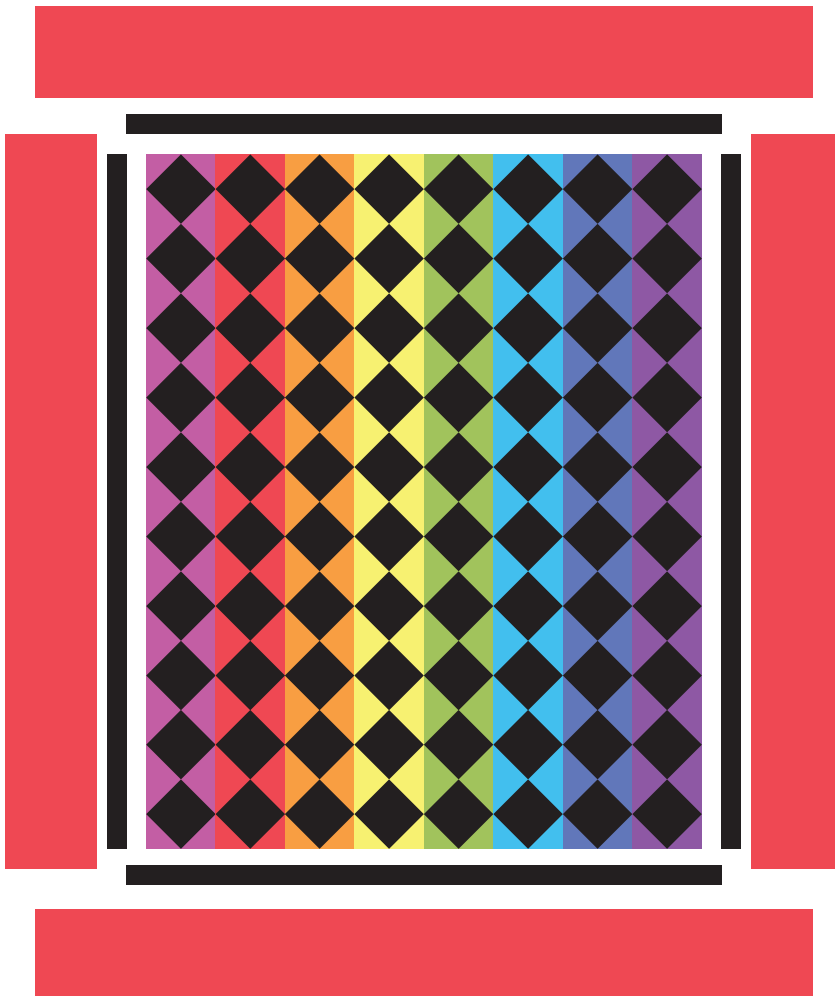
ADDING THE BORDERS:

1. Sew (5) 2" black print strips together using the diagonal seam method to create one long continuous length of fabric. Press seams to one side.
2. From the sewn 2" black strip, cut:
 - (2) 2" x 48 1/2" rectangles for the sides of the quilt
 - (2) 2" x 42 1/2" rectangles for the top and bottom inner border.
3. Sew (6) 6 1/2" red print strips together, using the diagonal seam method. Press seams to one side. From the sewn 6 1/2" red print strip, cut:
 - (2) 6 1/2" x 51 1/2" for the sides
 - (2) 6 1/2" x 54 1/2" rectangles for the top and bottom outer border.
4. Sew the two (48 1/2") black inner border rectangles to the sides of the pieced quilt top. Press seams toward the border fabric.

5. Sew the two remaining (42 1/2") rectangles to the top and bottom of the quilt. Press seams toward the border fabric.
6. Repeat steps 4 and 5, sewing the 51 1/2" red rectangles to the sides of the quilt and the 54 1/2" red rectangles to the top and bottom of the quilt. Press seams toward the border fabric.

FINISHING DIRECTIONS:

1. The 3 3/8" yards of backing fabric will need to be pieced to fit the quilt. Cut the length of fabric in half, creating 2 pieces of fabric 60" x wof.
 2. Using a 24" ruler and a rotary cutter, remove the selvage edges from both 60" fabric pieces. Sew with right sides together, sewing along the 60" side. Press seam to one side.
 3. Layer the quilt top with backing and batting. Baste. Quilt as desired.
 4. Trim off extra batting and backing fabric even with the outside edge of the quilt.
 5. Sew the 6 binding strips together using the diagonal seam method to create one long continuous strip. Press binding strip in half along the length with right sides facing out.
 6. With raw edges even, sew the binding to the front of the quilt using a 1/2" seam allowance. Fold binding around to the back and stitch down by hand.
- Don't forget the label on the back of your quilt.



Nancy Murty started Bee Creative Studio as a way to share her love of quilting with others. Nancy continues to inspire with her designs for Andover Fabrics and award winning art quilts and patterns.



For more designs by Nancy please visit her website at www.bee creativestudio.com.